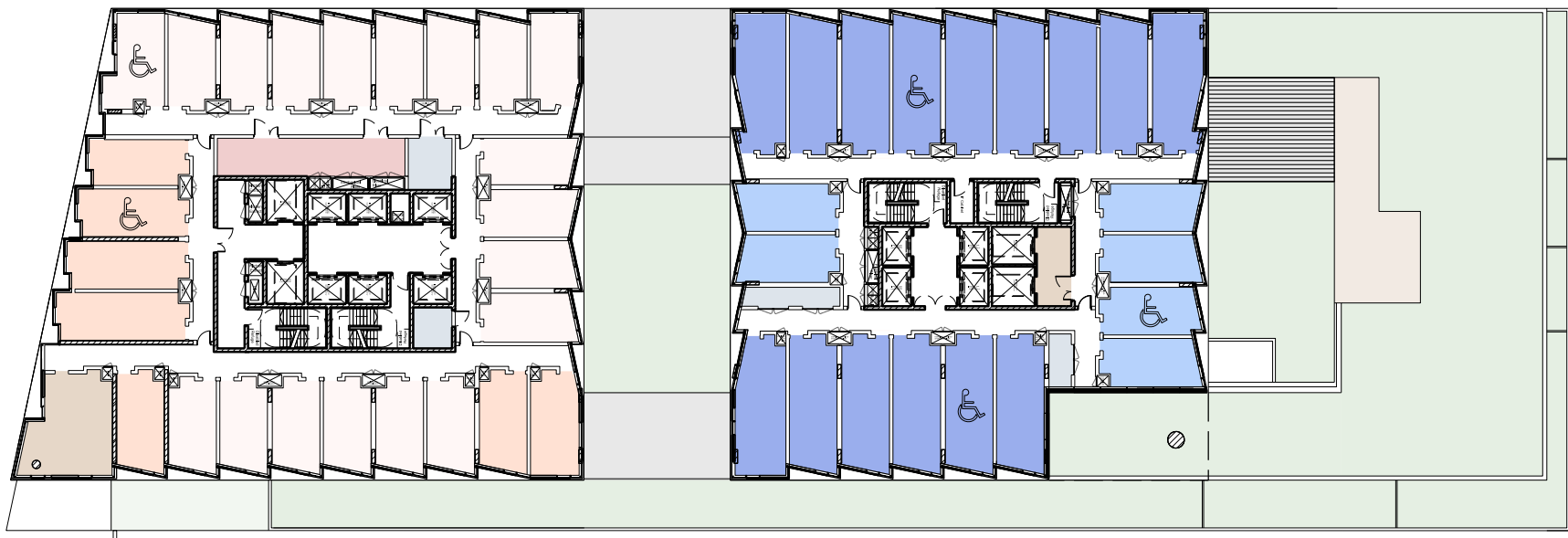
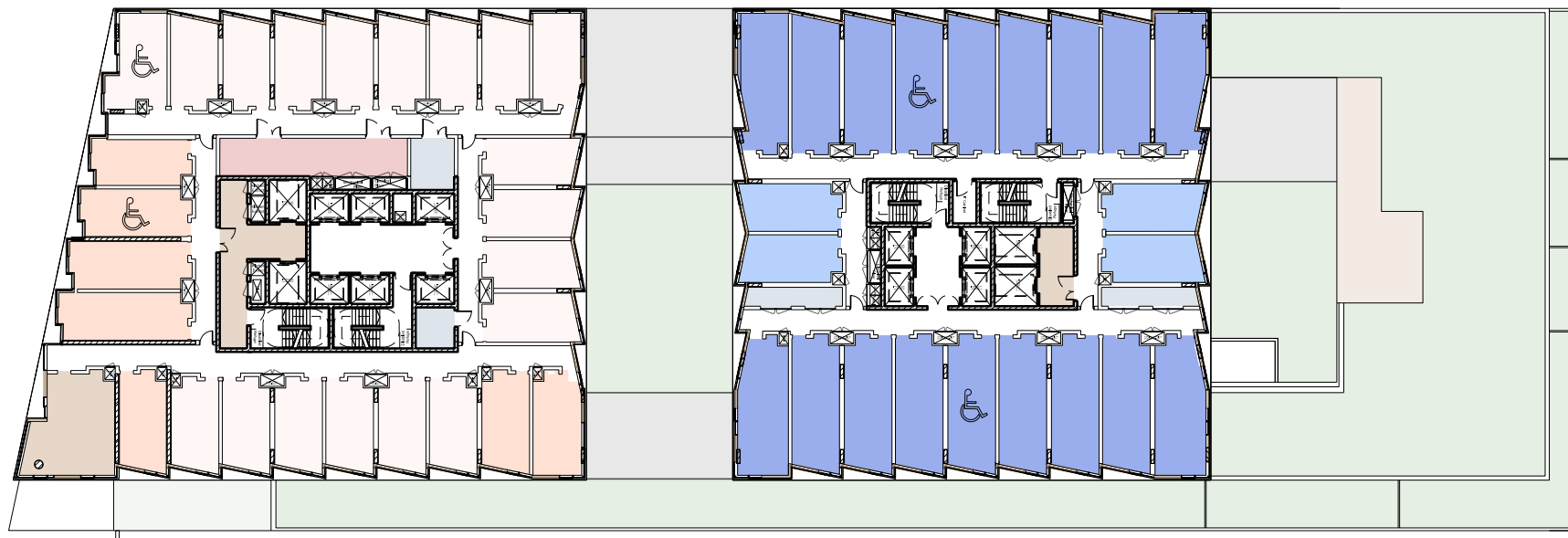


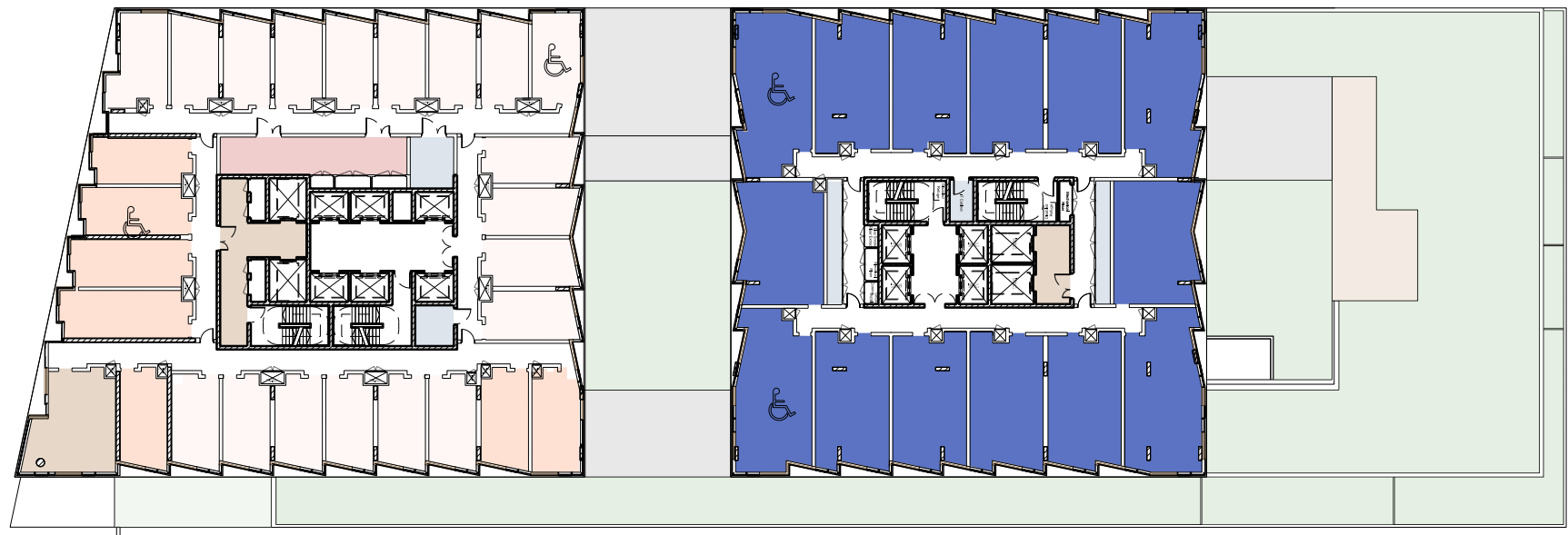
Level 09



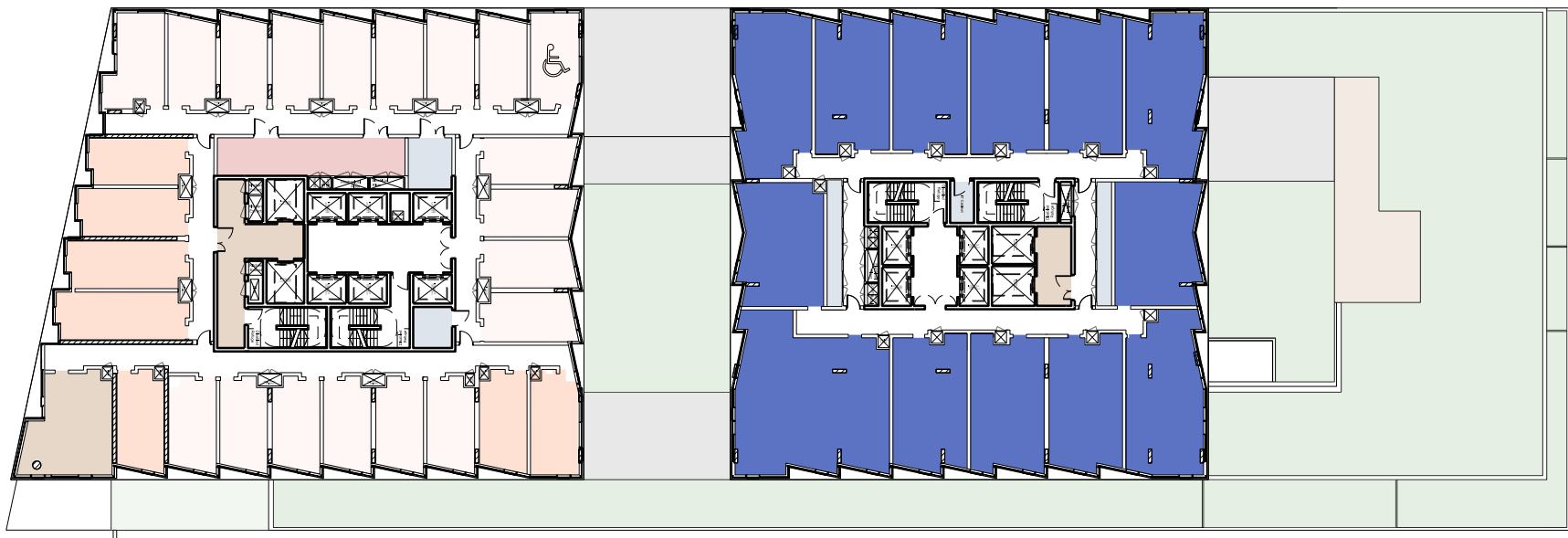
Level 10



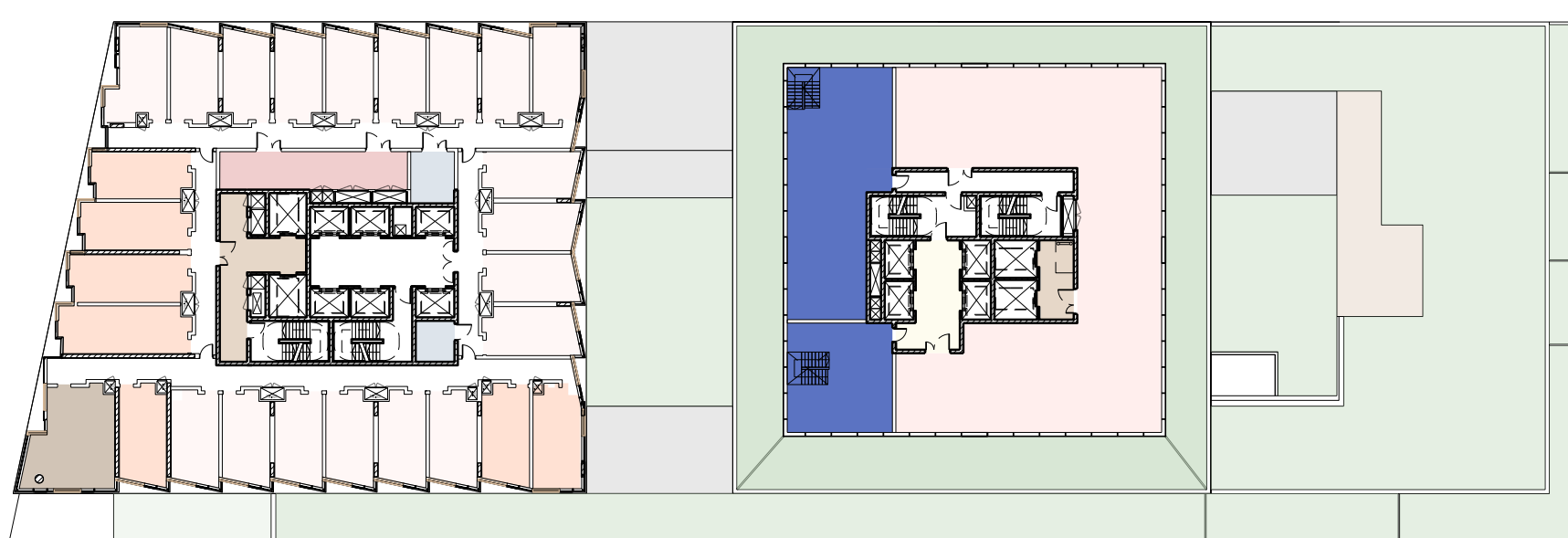
Levels 11-15



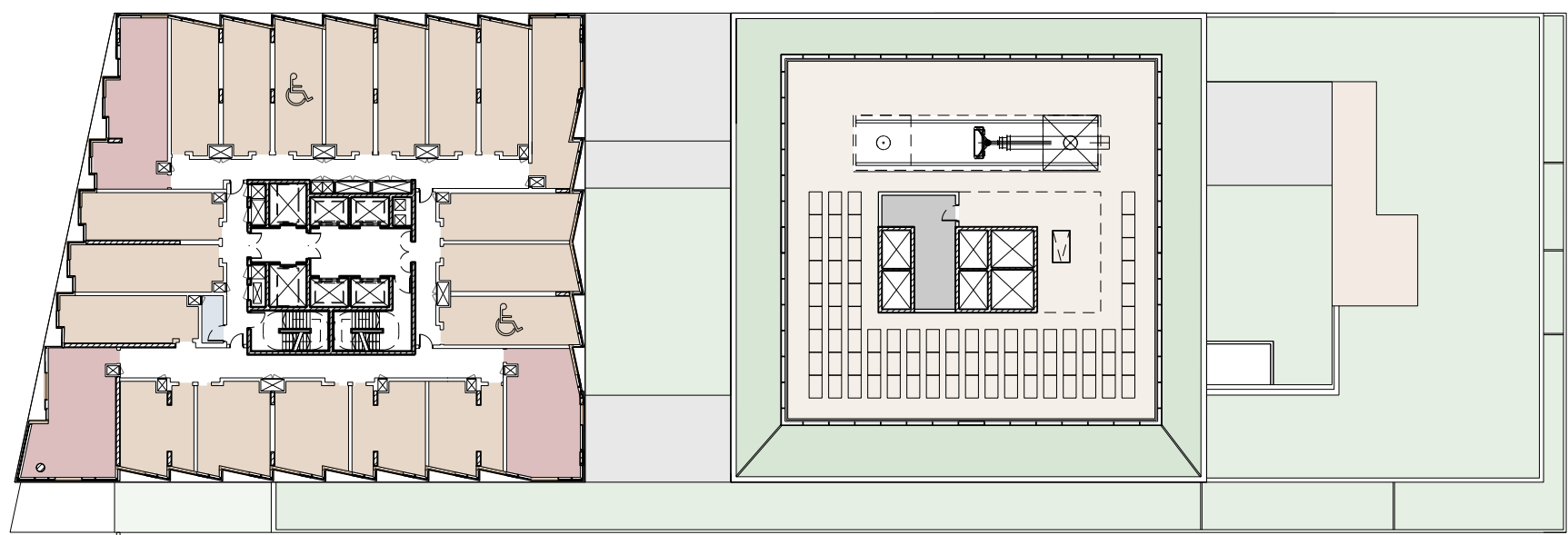
Levels 16-19



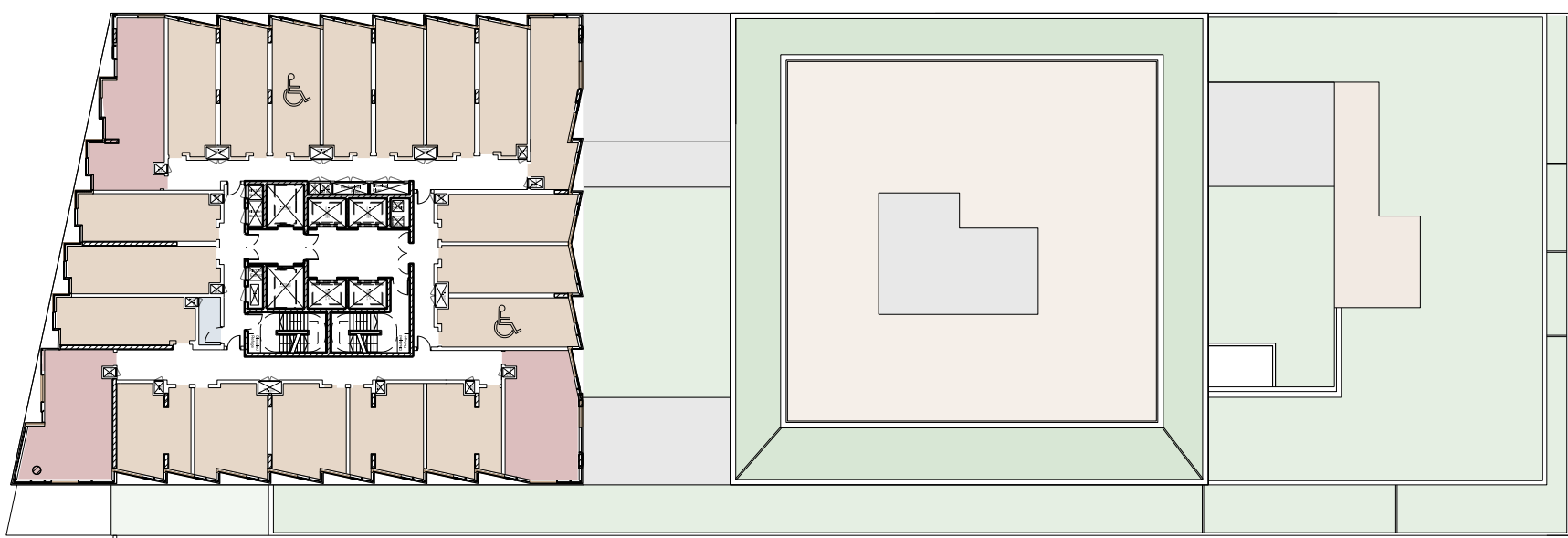
Level 20



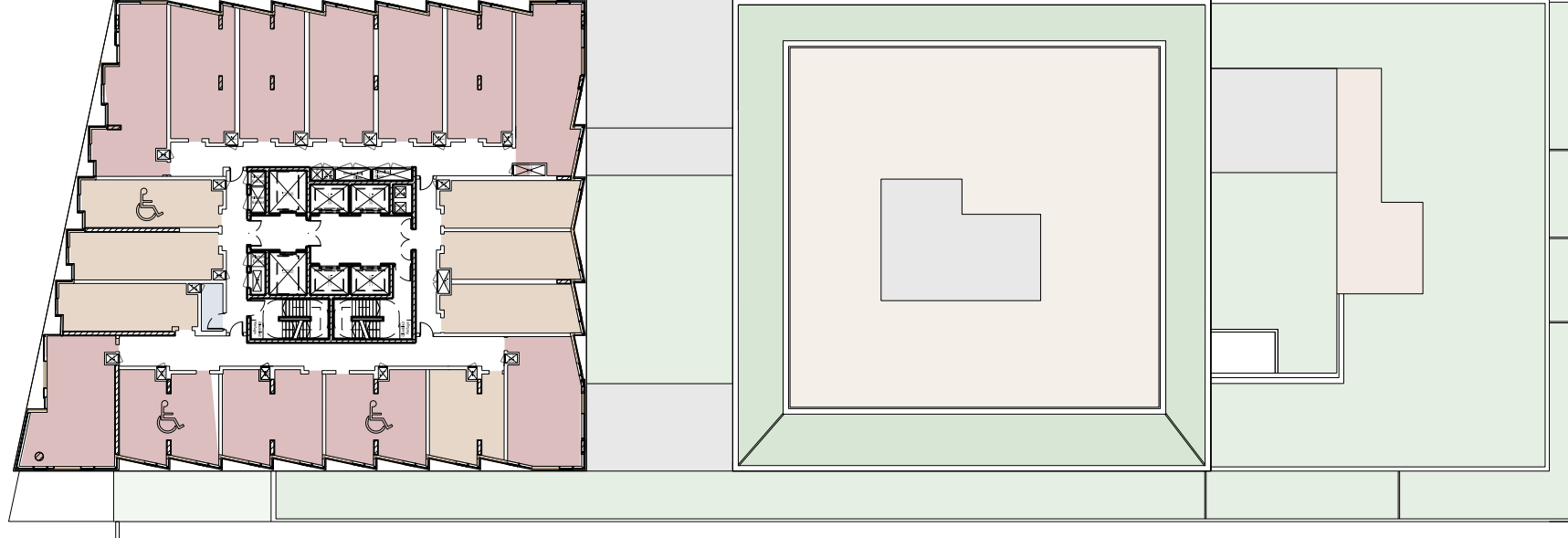
Level 21



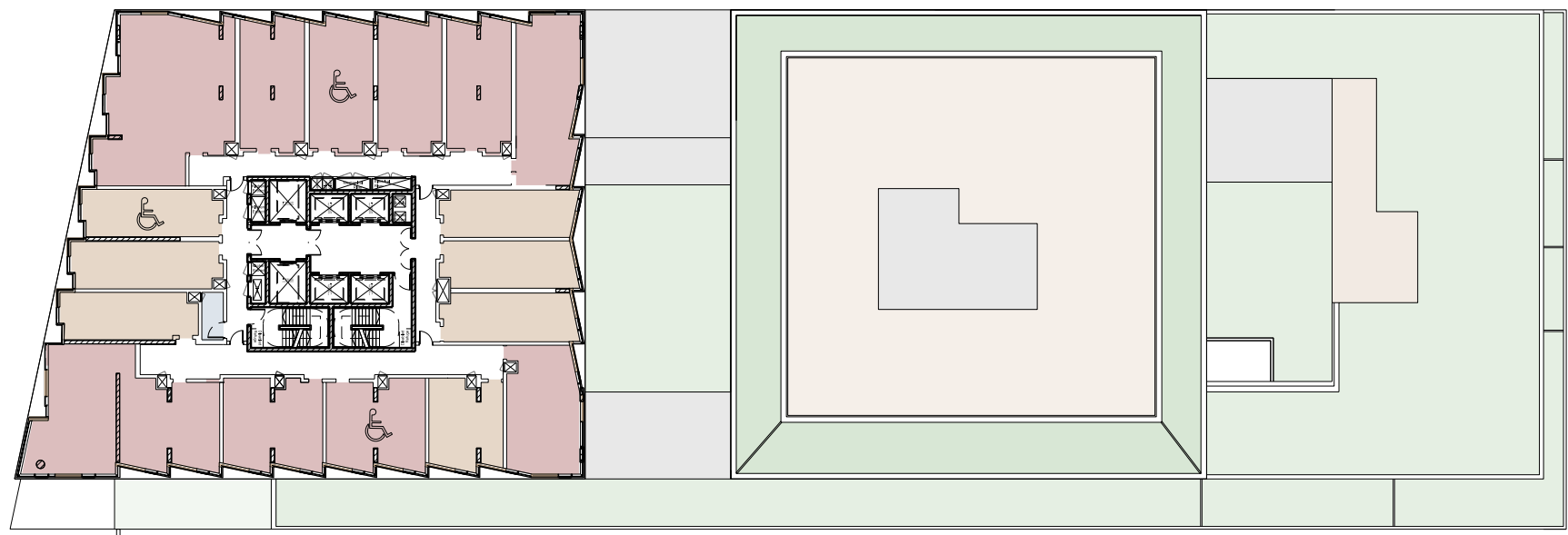
Level 22



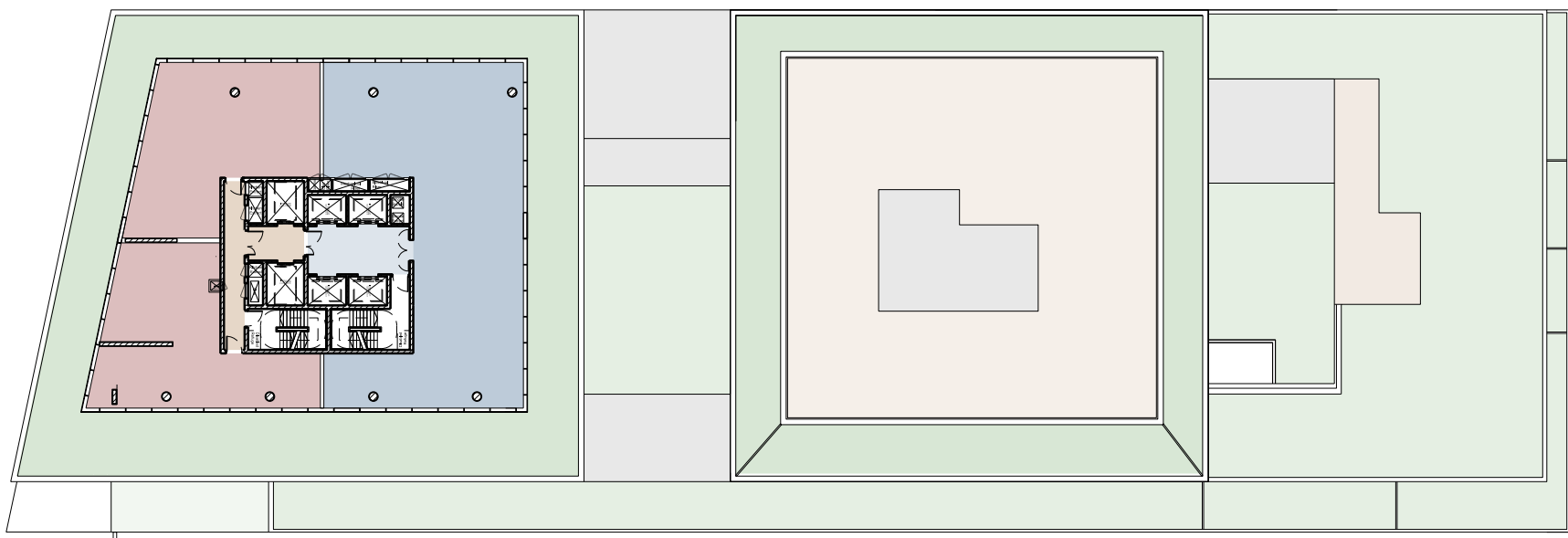
Levels 23-26



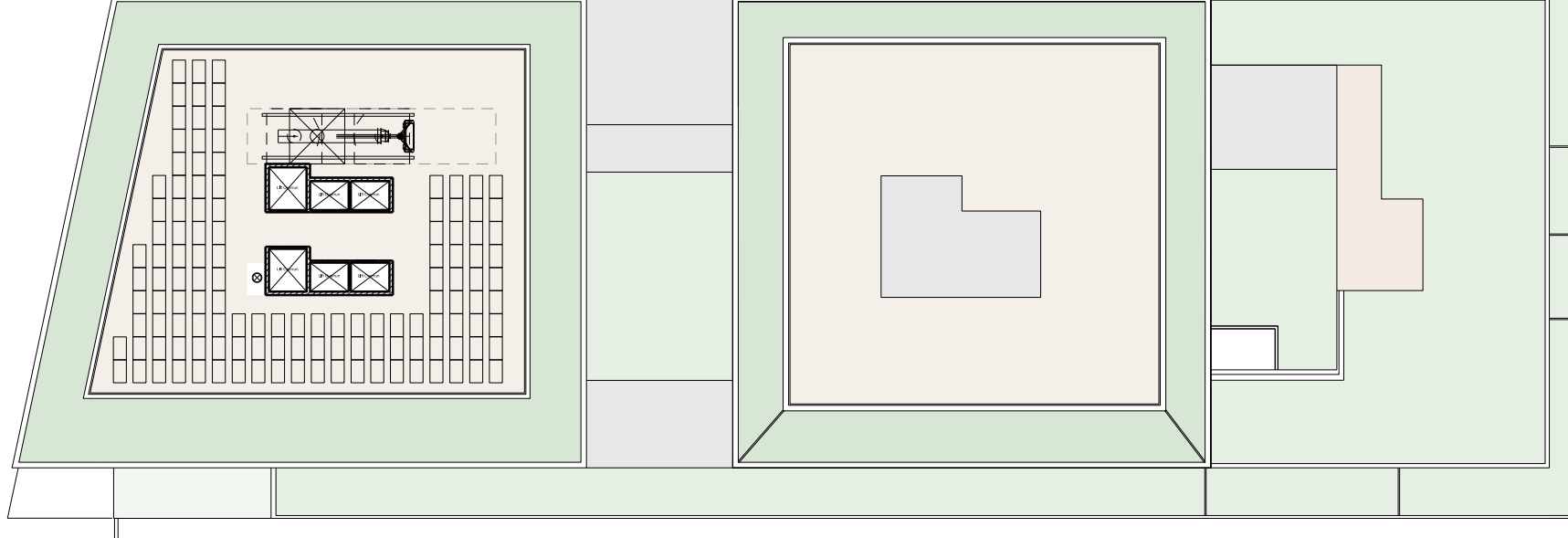
Level 27



Level 28



Level 29



Level 30



Serviced Residences - Studio 1

Serviced Residences - Studio 2

Serviced Residences - Studio 3



Residential - 3 Bed

Residential - 2 Bed

Residential - 1 Bed



Hotel - Standard

Hotel - Superior

Hotel - Deluxe



Hotel - Suite

Hotel Lobby

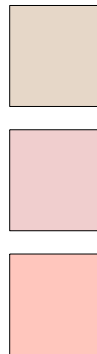
Restaurant / Bar



Plant

Hotel - Function

Hotel - Storage & WC



Hotel - Back of House Circulation

Staff Facilities

Kitchens



Linen Stores



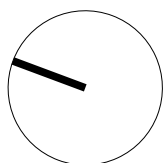
Wheelchair Accessible

This drawing is copyright
Do not scale off dimensions.
All dimensions to be checked on site by contractor.
Contractor to report any dimensional discrepancies,
errors or omissions prior to commencing on site.

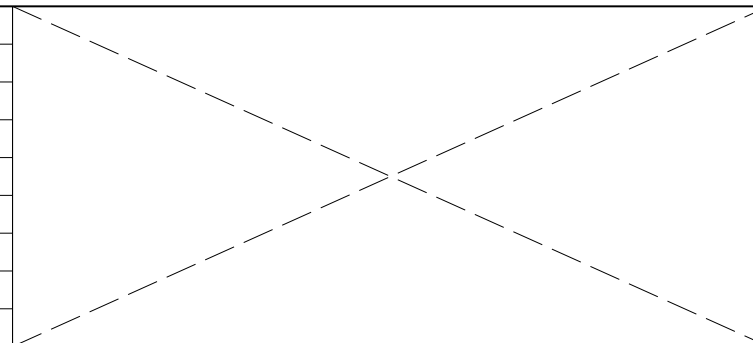
5 0 5 10 20 30m

NOTE:
To be read in conjunction with schedule
10106-A-SCH-Z0-Z100-9002_Master Schedule

NORTH



Rev	Date	Description
-	15/06/2018	Full Planning Application
A	11/01/2019	GLA Call-In Amendments



Project Title
10106
KENSINGTON FORUM HOTEL
LONDON, UK

Status
PLANNING

Drawing Title
Key Plans

Job No
10106

Scale
1:500(A1)
NTS(A3)

Date
JAN 2019

Drawing No
10106-A-DRG-Z0-F100-2001

Revision
A

SimpsonHaugh
AND PARTNERS

MANCHESTER
Riverside, 4 Commercial St
Manchester M15 4RQ
+44 (0)161 835 2345
www.simpsonhaugh.com

LONDON
5-8 Roberts Place
London EC1R 9BQ
+44 (0)20 7549 4000
mail@simpsonhaugh.com